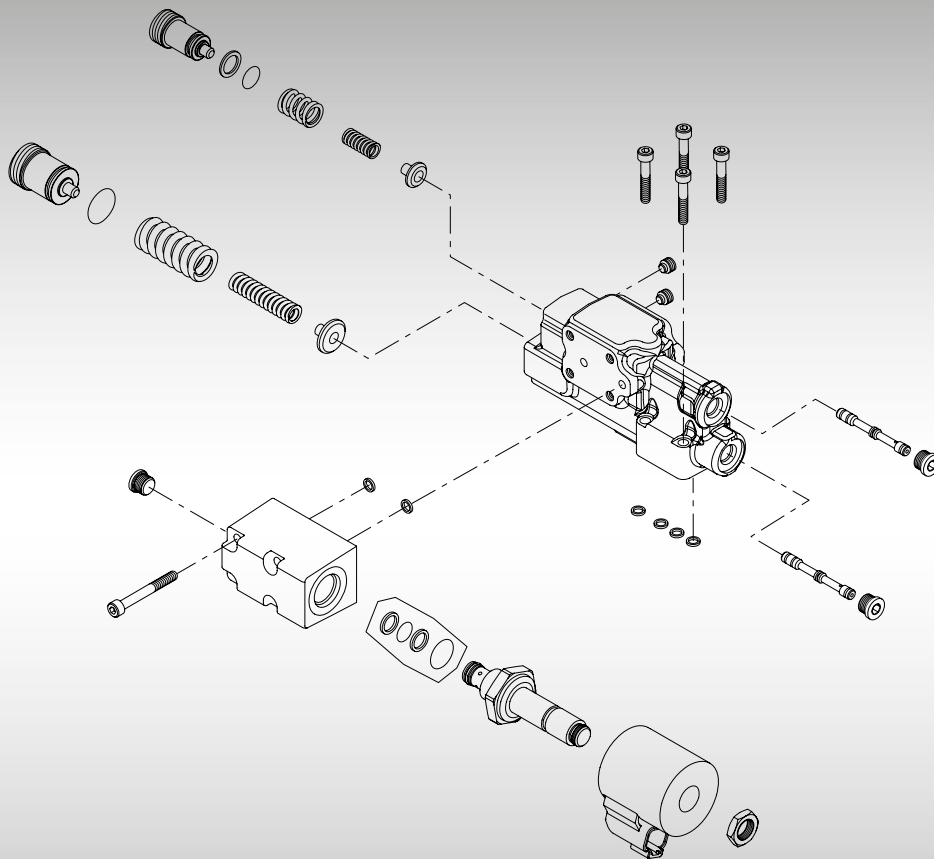




Parts Manual

Open Circuit Pumps Series 45 Frame E 100, 130 and 147cc





Contents

General Information	Service parts identification	4
	Nameplate	4
	Date code	5
	Service bulletins.....	5
	Procedure to identify a part.....	5
	Order code	7
Control	Load sensing	8-11
	Pressure compensating.....	12-13
	Remote pressure compensating.....	14-15
	Electric.....	16-95
	Pressure compensating/load sensing control, electric torque limiting	96-111
Choke orifice	Pilot orifice	112-113
Gain orifice	Gain orifice.....	112-113
Input shaft	Shaft	114-157
Auxiliary mounting	Auxiliary flange	114-157
End cap	End cap.....	114-157
Housing/shaft seal	Housing/shaft seal	158-159
Displacement limiter	Displacement limiter.....	160-161
Special hardware	Special hardware	160-161
Displacement	Displacement.....	162-163
Seal kit	Overhaul seal kit.....	163



Contents

Service bulletins	SB-2002-031 (load sense spring guide).....	164
	SB-2002-034 (pressure compensator spring guide).....	165
	SB-2005-009 (adjustable displacement limiter).....	166
	SB-2006-016 (torque specification for servo piston guide and bias piston guide).....	167
	SB-2007-029 (14 tooth shaft).....	168
	SB-2007-047 (load sense plug assembly).....	169
	SB-2008-005 (end cap seal).....	170
	SB-2008-018 (bias piston).....	171
	SB-2010-017 (C pad seal).....	172
	SB-2010-019 (straight key shaft).....	173
	SB-2010-026 (LS and PC plug assembly).....	174
	SB-2010-050 (cylinder block and piston assembly).....	175
	SB-2011-027 (shaft undercut).....	176
	SB-2012-011 (control/orifice).....	177-178
	SB-2012-020 (displacement limiter).....	179
	SB-2012-029 (overhaul seal kit).....	180



General information

Service parts identification

Use this information and procedure to identify the module group, item number, manufacture date, part number, and part name. The Frame E includes the 100, 130 and 147cc displacement pumps.

The parts listed include all parts that may be used when performing either “Minor Repairs”, “Major Repairs” or “Conversions” on the Frame E open circuit pumps.

Nameplate

Each unit will have a nameplate affixed to the housing. The nameplate will include the following information.

Model Code

The Sauer-Danfoss model code completely defines the specific unit and must be used when ordering parts to service this product.

Model Number

The Sauer-Danfoss model number is used by the factory in manufacturing. On repeat orders, a complete unit can be ordered by the model number.

Serial Number

The Sauer-Danfoss serial number is used to identify the manufacture date and the unit sequence in the build. The serial number is also used to identify the units warranty time period.

The letter code indicates the location of original manufacture (assembly). “A” indicates the unit was originally assembled in Ames, Iowa, USA. “N” indicates the unit was originally assembled in Neumunster, Germany.

The first number (2 digits) indicates the year of manufacture. (“02” would indicate the unit was manufactured in 2002)

The second number (2 digits) indicates the calendar week of manufacture.

The third number (5 digits) is a sequential number used to identify a specific unit.





General information

Date code

The date code is the year and week of manufacture. The same item number may list more than one part number. This indicates that there is more than one configuration for that item number. You will see that there are different date codes for the different part numbers. Find the date code of your unit from the nameplate to determine the service part number you need to order.

EXAMPLE: The service part desired is Item C090

Order Code	Item	Date Begin	Date End	Part Number	Part Name	Qty. per Model/Kit
LB	C090	98-02		4570245	Spool	1
	C090	94-34	98-01	4570025	Spool (SB-1995-006)	1

All units using this order code with a date code of 94-34 and up to and including 98-01 must use part number "4570025".

All units with a date code of 98-02 and newer must use part number "4570245".

Service bulletins

A Service Bulletin Number (SB-____-____) may follow the "Part Name" of the part you desire. You must read that Service Bulletin before ordering that part. The information contained in these Service Bulletins, as of the print date of this bulletin, are at the end of this manual. Service Bulletins contain more detailed information, such as: interchangeability, what additional parts are involved, etc. We suggest that you add additional Service Bulletins to this manual as you receive them.

Procedure to identify a part

General

The modular design of Series 45 units results in a simplified service parts list and part number identification procedure. The same item numbers are used for same part names on all units within a product type. (Example: The lip seal - Item K020 has the same item number on all pumps.)

A part number that has another number following it in parentheses makes this a world wide manual. The first number is sold in Germany. The number in parentheses is sold in the United States. (Example: 016014 (9006200-0206); customers would order 9006200-0206 if ordering the part in the United States.)

Example of a Part Identification

The nameplate on a Series 45 pump has an Order Code of ERR 130B BS 31 20 NN N 3 S2NL A1N NNN NNN NNN. Do this to determine the part number of the drive shaft used on this pump.

- 1) Referring to the input shaft module in the Order Code (see page 7), the input shaft option for this pump is identified by the code "S2NL". (ERR 130B BS 31 20 NN N 3 **S2NL** A1N NNN NNN NNN)
- 2) Referring to the Service Parts List, find the shaft group.
- 3) Next find the order code that relates to this unit, which is "S2NL". The shaft is found to be item J010 and part number 1700455.